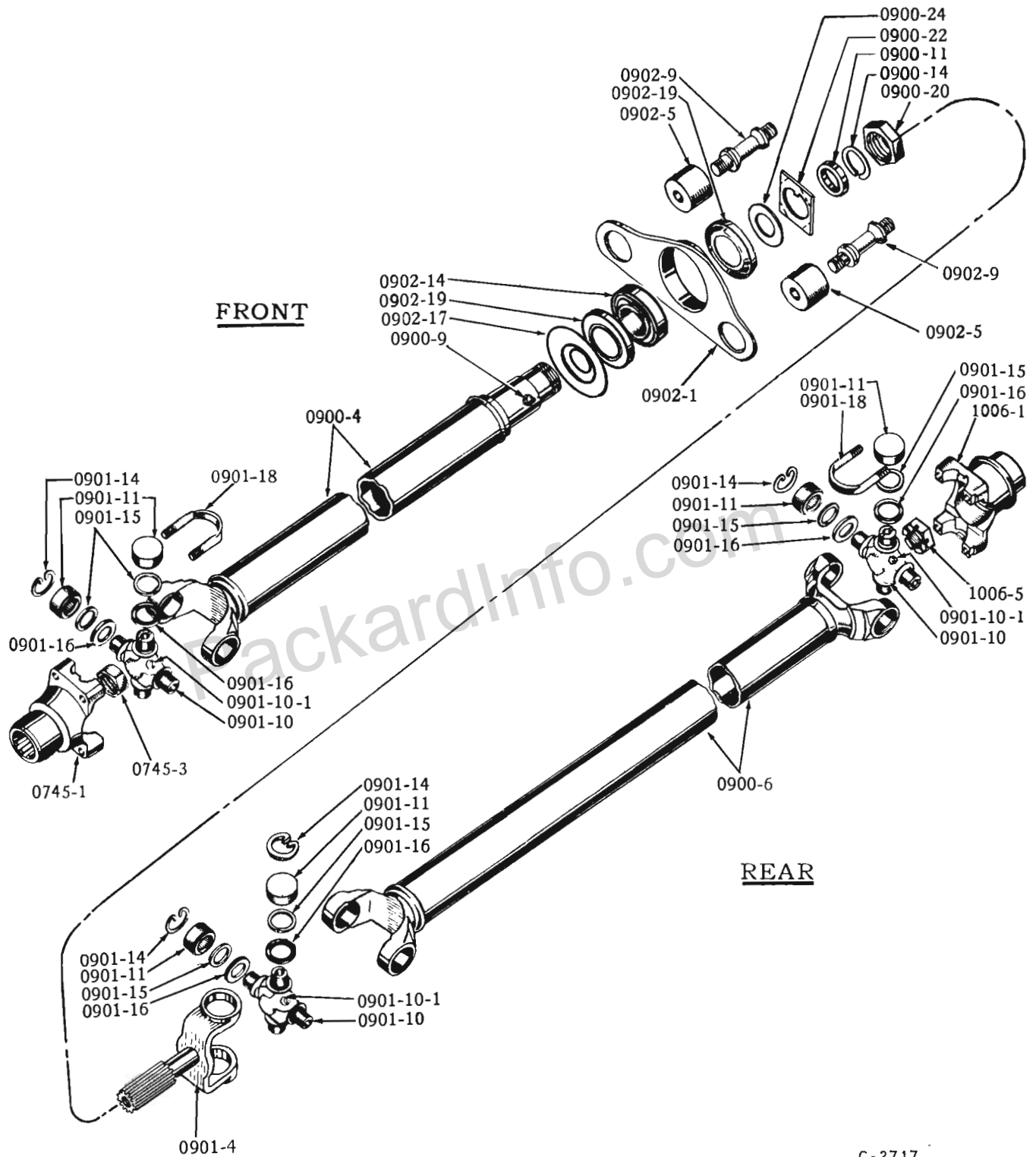


PROPELLER SHAFT

Plate 09-1



C-2717

PROPELLER SHAFT, UNIVERSAL JOINTS AND SUPPORT

PROPELLER SHAFT

ILLUST. NUMBER	PART NUMBER	CHANGE	DESCRIPTION	MODELS	PER CAR
----------------	-------------	--------	-------------	--------	---------

0900- PROPELLER SHAFT (Plate 09-1)



FRONT



REAR

C-2702

LENGTH SHOWN IS FOR SHAFT ONLY, AS ILLUSTRATED ABOVE

FRONT SHAFTS

532225	SHAFT AND JOINT - w/ST. - W-F-D-P	31 7/16"	16G6, 56G, 57G	1
532223	SHAFT AND JOINT - w/ST. - C-K	25 21/32"	16G6, 56G, 57G	1
532220	SHAFT AND JOINT - w/OD. - W-F-D-P	23 3/32"	16G6, 56G, 57G	1
532217	SHAFT AND JOINT - w/OD. - C-K	17 9/32"	16G6, 56G, 57G	1
535456	SHAFT AND JOINT - w/AD. - W-F-D } NOTE. 25"		16G6, 56G	1
535457	SHAFT AND JOINT - w/AD. - C-K	19 3/16"	16G6, 56G	1
1539130	SHAFT AND JOINT - w/AD. - W-F-D-P } NOTE. 22 5/16"		56G, 57G	1
1539131	SHAFT AND JOINT - w/AD. - C-K	2 16 1/2"	56G, 57G	1
522224	SHAFT AND JOINT - w/ST. - W-F-D-P-Y	29 25/32"	ALL EIGHTS	1
532221	SHAFT AND JOINT - w/ST. - C-K	24"	ALL EIGHTS	1
532219	SHAFT AND JOINT - w/OD. - W-F-D-Y } T86 21 3/4"		16G8, 6H, 56B, 56H	1
532219	SHAFT AND JOINT - w/OD. - W-F-D-P-Y } TRANS. 21 3/4"		57B, 57H	1
1539133	SHAFT AND JOINT - w/OD. - W2-W4-F2-F4-D4 - T85 TRANS.	19 15/16"	56B	1
1539133	SHAFT AND JOINT - w/OD. - W-F-D-P - LHC - T85 TRANS.	19 15/16"	57H	1
1539133	SHAFT AND JOINT - w/OD. - Y - LHC	19 15/16"	56H	1
532219	SHAFT AND JOINT - w/OD. - Y - RHC	21 3/4"	56H	1
532216	SHAFT AND JOINT - w/OD. - C-K	15 15/16"	16G8, 6H, 56B, 56H, 57B	1
532216	SHAFT AND JOINT - w/OD. - C-K3	15 15/16"	57H	1
1541747	SHAFT AND JOINT - w/OD. - K7	14 1/8"	57H	1
532222	SHAFT AND JOINT - w/AD. - W-F-D-Y - w/224" ENG.	25"	16G8	1
535456	SHAFT AND JOINT - w/AD. - W-F-D-Y - w/259" ENG.	25"	16G8, 6H	1
1539130	SHAFT AND JOINT - w/AD. - W-F-D-P-Y	22 5/16"	56B, 56H, 57B, 57H	1
535457	SHAFT AND JOINT - w/AD. - C-K	19 3/16"	16G8, 6H	1
1539131	SHAFT AND JOINT - w/AD. - C-K	16 1/2"	56B, 56H, 57B	1
1539131	SHAFT AND JOINT - w/AD. - C-K3	16 1/2"	57H	1
1541748	SHAFT AND JOINT - w/AD. - K7	16 1/2"	57H	1
1541746	SHAFT AND JOINT	15 15/16"	56J	1
1543649	SHAFT AND JOINT - w/OD.	19 15/16"	57L	1
1543650	SHAFT AND JOINT - w/OD. - RHC	21 3/4"	57L	1
1541749	SHAFT AND JOINT - w/AD.	22 5/16"	57L	1

REAR SHAFTS

535460	SHAFT AND JOINTS - W-F-D-P	39 23/32"	16G6, 56G, 57G	1
535462	SHAFT AND JOINTS - C-K	43 21/32"	16G6, 56G, 57G	1
532232	SHAFT AND JOINTS - W-F - w/224" ENG.	39 23/32"	16G8	1
532228	SHAFT AND JOINTS - W-F - w/229" ENG.	39"	16G8	1
532228	SHAFT AND JOINTS - D	39"	16G8	1
532228	SHAFT AND JOINTS - W-F-D-P	39"	56B, 56H, 57B, 57H	1
535462	SHAFT AND JOINTS - C-K - w/224" ENG.	43 21/32"	16G8	1
535461	SHAFT AND JOINTS - C-K - w/259" ENG.	42 15/16"	16G8	1
535461	SHAFT AND JOINTS - C-K-Y	42 15/16"	6H, 56B, 56H, 56J, 57B, 57H	1
1541597	SHAFT AND JOINTS - P	39"	57L	1
535461	SHAFT AND JOINTS - Y	42 15/16"	57L	1

NOTES { 1 - USED WITH STUDEBAKER AUTOMATIC TRANSMISSION.
2 - USED WITH FLIGHT-O-MATIC TRANSMISSION.

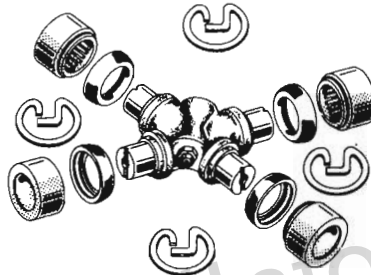
PROPELLER SHAFT

0900

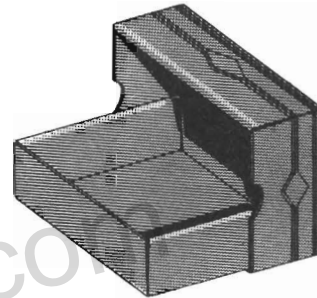
ILLUST. NUMBER	PART NUMBER	CHANGE	DESCRIPTION	MODELS	PER CAR
0900- PROPELLER SHAFT-Cont'd. (Plate 09-1)					
0900-4	▲ -----		SHAFT AND YOKE, FRONT - SEE SHAFT AND JOINT	ALL MODELS	1
0900-6	▲ -----		SHAFT AND YOKES, REAR - SEE SHAFT AND JOINTS	ALL MODELS	1
0900-9	G271287		GREASE FITTING, SHAFT SLEEVE	ALL MODELS	1
0900-11	522053		WASHER, SHAFT SLEEVE GREASE	ALL MODELS	1
0900-14	522054		RETAINER, SHAFT GREASE WASHER	ALL MODELS	1
0900-20	522051		NUT, SHAFT SLEEVE GREASE WASHER OR CAP	ALL MODELS	1
0900-22	522052		LOCK PLATE, NUT	ALL MODELS	1
0900-24	527024		SPACER, LOCK PLATE	ALL MODELS	1
0901- UNIVERSAL JOINT (Plate 09-1)					
0901-4	526994		YOKE, UNIVERSAL JOINT SLIP	ALL MODELS	1



TYPE A



TYPE B



C-3507

CROSS AND BEARING UNIT

CROSS AND BEARINGS UNIT

516059		CROSS AND BEARINGS UNIT, U-JOINT - TYPE A	} SEE ILLUST.	ALL MODELS	3
1541448		CROSS AND BEARINGS UNIT, U-JOINT - TYPE B		ALL MODELS	3
0901-10	▲ ----	CROSS, UNIVERSAL JOINT (FURNISHED ONLY IN UNIT)		ALL MODELS	3
0901-10-1	G271287	GREASE FITTINGS, CROSS		ALL MODELS	3
0901-11	▲ ----	BEARING, UNIVERSAL JOINT CROSS (FURNISHED ONLY IN UNIT)		ALL MODELS	3
0901-14	182540	SNAP RING, UNIVERSAL JOINT CROSS BEARING		ALL MODELS	8
0901-15	182539	WASHER, UNIVERSAL JOINT CROSS BEARING - CORK (TYPE A)		ALL MODELS	12
0901-15	1541451	●SEAL, UNIVERSAL JOINT CROSS BEARING - RUBBER (TYPE B)		ALL MODELS	12
0901-16	182538	RETAINER, U-JOINT CROSS BEARING WASHER		ALL MODELS	12
0901-18	187425	CLIP, UNIVERSAL JOINT CROSS BEARING		ALL MODELS	4
	G120368	NUT, TO FLANGE 5/16"-24		ALL MODELS	8
	G120214	WASHER, LOCK 5/16"		ALL MODELS	8
	----	FLANGE, TRANS. UNIVERSAL JOINT, SEE GROUPS 0745 - 0847		ALL MODELS	1
	----	FLANGE, REAR AXLE UNIVERSAL JOINT, SEE GROUP 1006		ALL MODELS	1

● - NOT INTERCHANGEABLE WITH CORK WASHER.

NOTE { ▲ - NOT AVAILABLE.

ILLUST. NUMBER	PART NUMBER	CHANGE	DESCRIPTION	MODELS	PER CAR
0902- PROPELLER SHAFT SUPPORT (Plate 09-1)					
0902-1	532009		SUPPORT, SHAFT	ALL MODELS	1
0902-5	519175		CUSHION, SHAFT SUPPORT	ALL MODELS	2
0902-9	524184		STUD. TO FRAME 3/8"-24X 2 3/16"	ALL MODELS	2
	G120369		NUT, HEX. 3/8"-24	ALL MODELS	4
	----		WASHER, PLAIN 3/8"	ALL MODELS	2
	G120382		WASHER, LOCK 3/8"	ALL MODELS	4
0902-14	664443		BEARING, SHAFT SUPPORT	ALL MODELS	1
0902-17	530421		DUST SHIELD, OUTER, SUPPORT BEARING	ALL MODELS	1
0902-19	531016		DUST SHIELD, INNER, SUPPORT BEARING	ALL MODELS	2

PackardInfo.com